

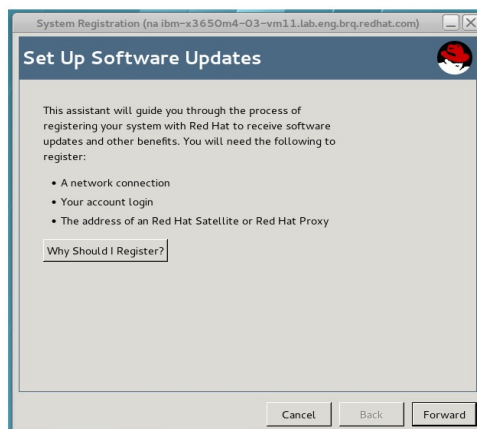
RHEL7 rhn-client-tools GUI and TUI inconsistency

General notes

- use Red Hat Satellite everywhere (instead of Spacewalk, RHN Satellite, RHN, RHN Classic – because rhn_registration GUI/TUI on RHEL7 can be used only for registration against Red Hat Satellite 5.6 or Red Hat Proxy 5.6 (?))
- don't use shortened forms (I'd like -> I would like)
- titles / messages should be consistent and the same everywhere
- in TUI we cannot specify Proxy, in GUI we cannot specify SSL cert path
- when system has already been registered (using RHN Classic or Subscription manager) – the message should provide the correct information (tested on RHEL7 registered using rhnreg_ks to Satellite and rhn_register TUI claims that it's been already registered using subscription manager)

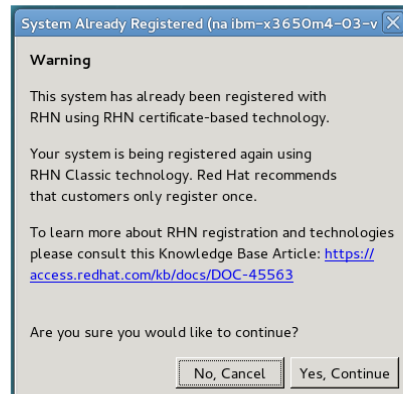
1. System registration

- GUI: Set Up Software Updates / TUI: System Registration
- GUI: This assistant will guide you through the process of registering your system with Red Hat to receive software updates and other benefits. / TUI: This assistant will guide you through connecting your system to Red Hat Satellite to receive software updates, including security updates, to keep your system supported and compliant.
- GUI: You will need the following to register / TUI: You will need the following at this time
- GUI: Your account login / TUI: Your Red Hat Login & password
- GUI: The address of an Red Hat Satellite or Red Hat Proxy / TUI: The location of a Red Hat Satellite or Proxy
- GUI: Why Should I Register? / TUI: Why Should I Connect to RHN? ...

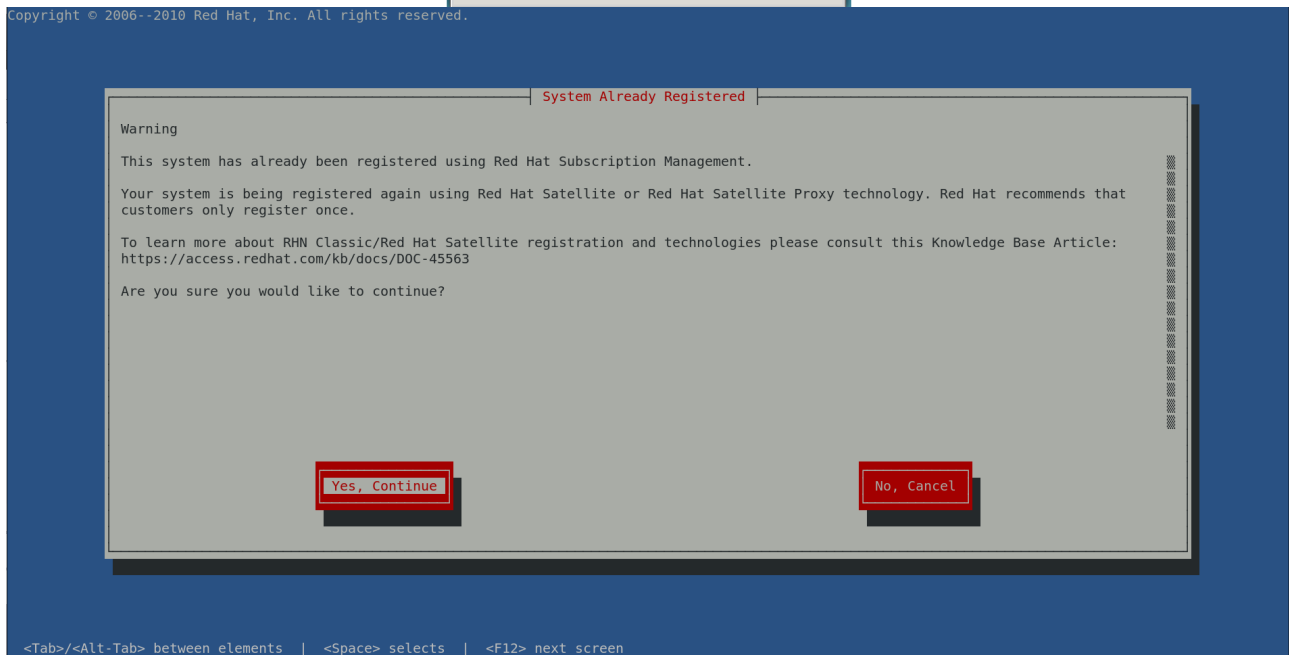


2. System Already Registered

- GUI: This system has already been registered with RHN using RHN certificate-based technology. / TUI: This system has already been registered using Red Hat Subscription Management.
- GUI: Your system is being registered again using RHN Classic technology. / TUI: Your system is being registered again using Red Hat Satellite or Red Hat Satellite Proxy technology.
- GUI: To learn more about RHN registration and technologies ... / TUI: To learn more about RHN Classic/Red Hat Satellite Registration and technologies ...

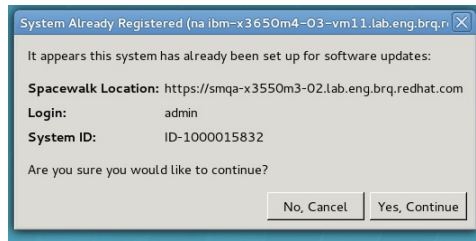


Copyright © 2006--2010 Red Hat, Inc. All rights reserved.

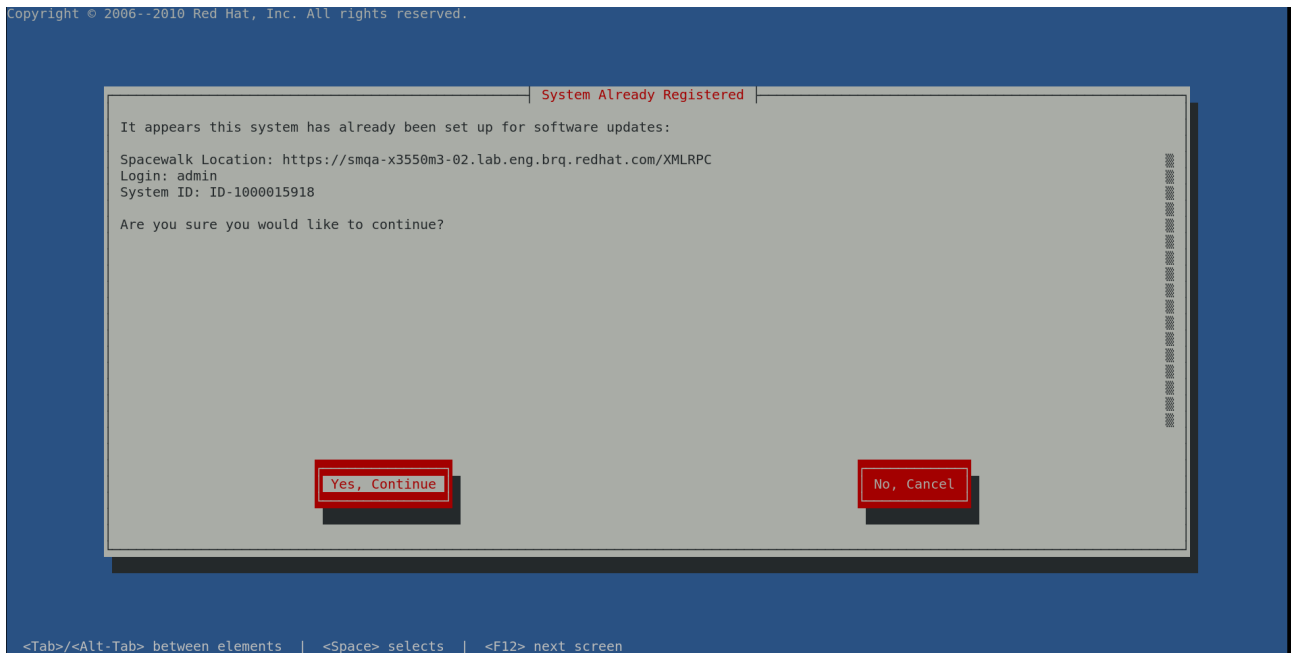


3. System Already Registered

- GUI: Spacewalk Location: `https://<hostname> /` / TUI: Spacewalk Location: `https://<hostname>/XMLRPC`

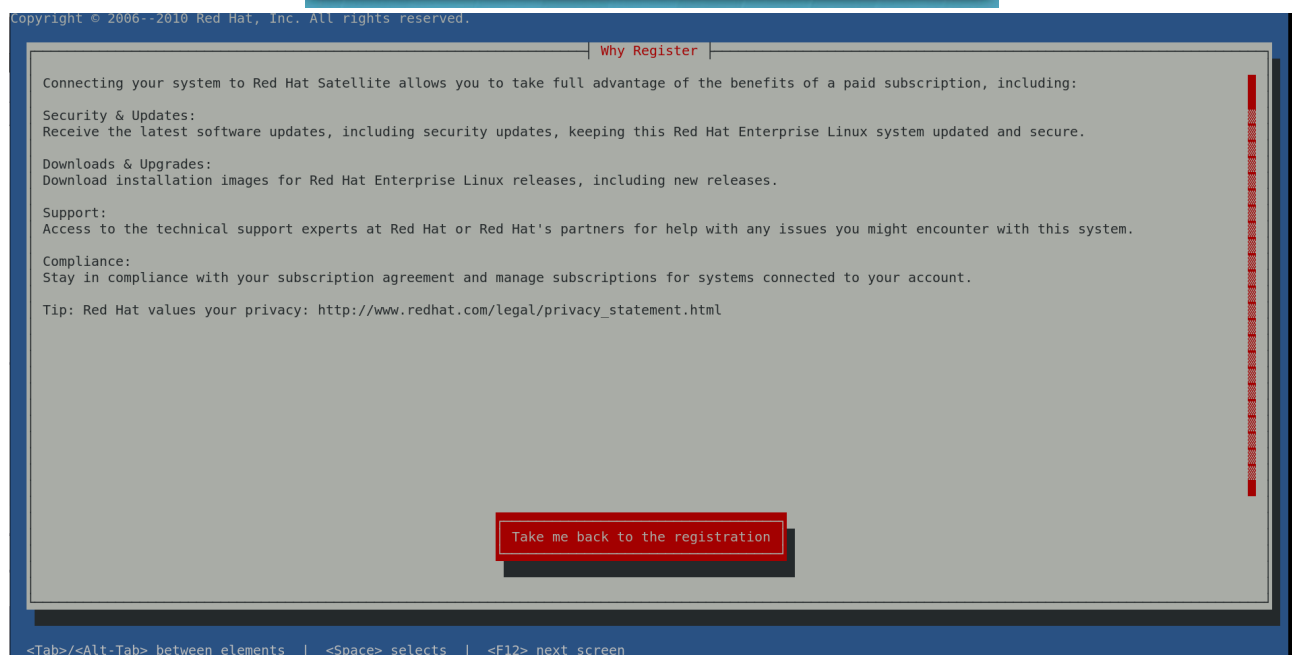
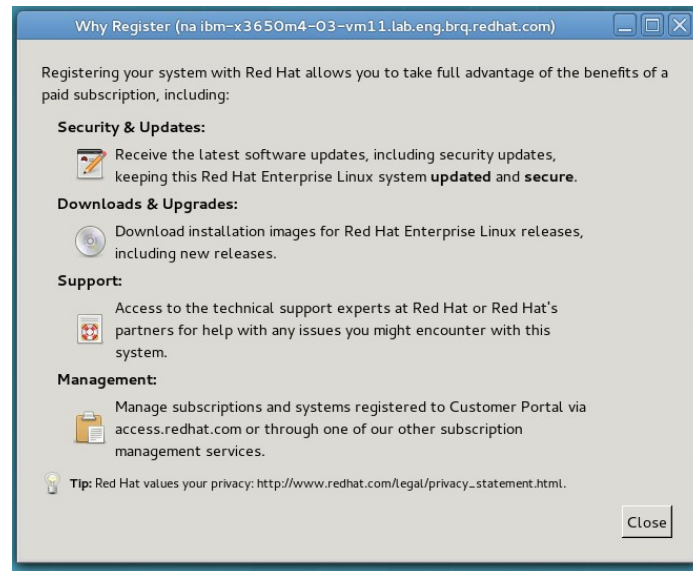


Copyright © 2006--2010 Red Hat, Inc. All rights reserved.



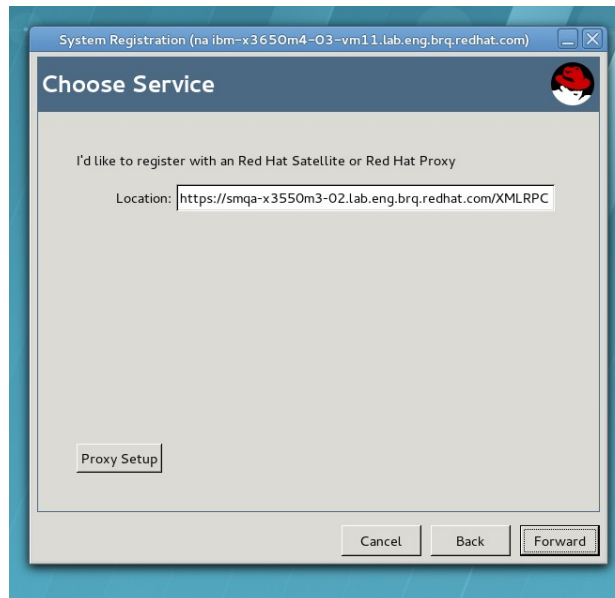
4. Why Register

- GUI: Registering your system with Red Hat allows you to take full advantage of the benefits of a paid subscription, including / TUI: Connecting your system to Red Hat Satellite allows you to take full advantage of the benefits of a paid subscription, including
- GUI: Management / Manage subscriptions and systems registered to Customer Portal via access.redhat.com or through one of our other subscription management services. / TUI: Compliance / Stay in compliance with your subscription agreement and manage subscriptions for systems connected to your account.

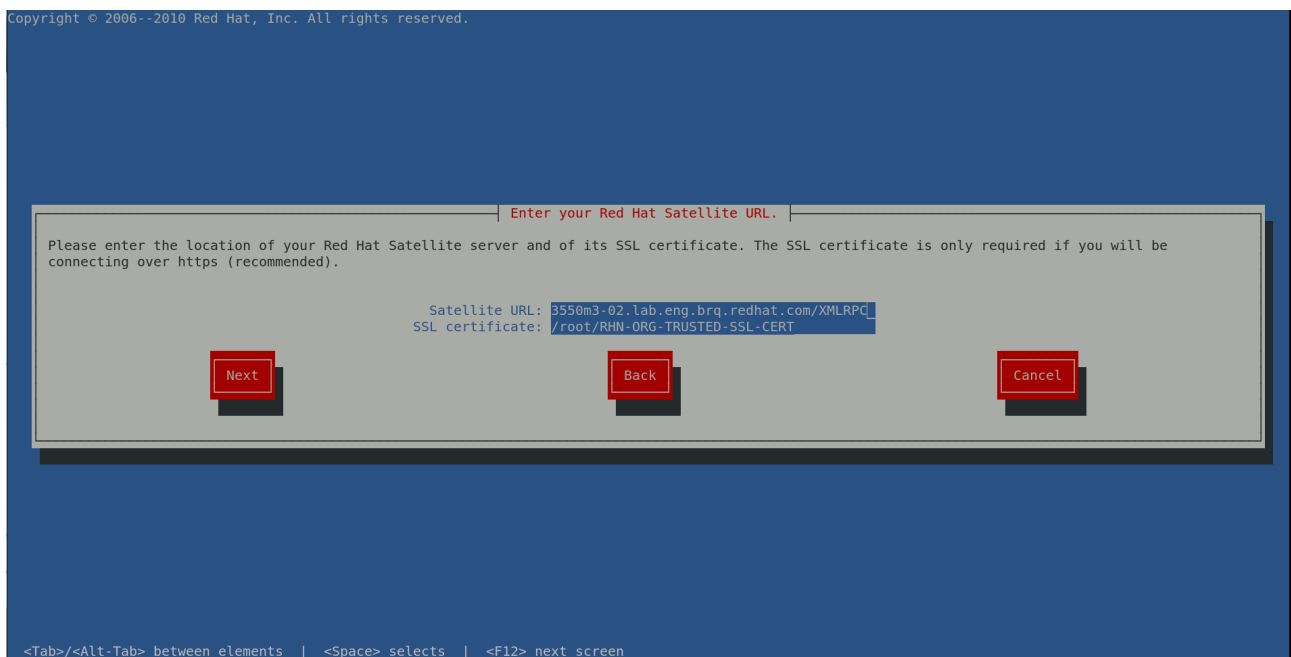


5. Choose Service

- GUI: Choose Service / TUI: Enter your Red Hat Satellite URL.
- GUI: I'd like to register with an Red Hat Satellite or Red Hat Proxy / TUI: Please enter the location of your Red Hat Satellite server and of its SSL certificate. The SSL certificate is only required if you will be connecting over https (recommended).
- GUI: Location / TUI: Satellite URL
- GUI: ... / TUI: SSL certificate
- GUI: Proxy Setup / TUI: ...

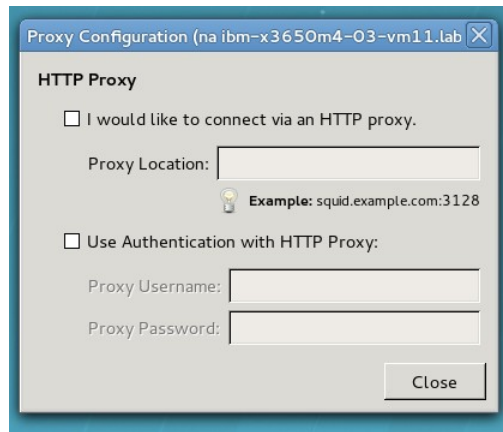


Copyright © 2006--2010 Red Hat, Inc. All rights reserved.




6. Proxy Configuration

- GUI: I would like to connect via an HTTP proxy. / TUI: no tui for Proxy



A screenshot of a 'Proxy Configuration' dialog box. The title bar reads 'Proxy Configuration (na ibm-x3650m4-03-vm11.lab)'. The dialog has a light gray background and a blue border. It contains the following elements:

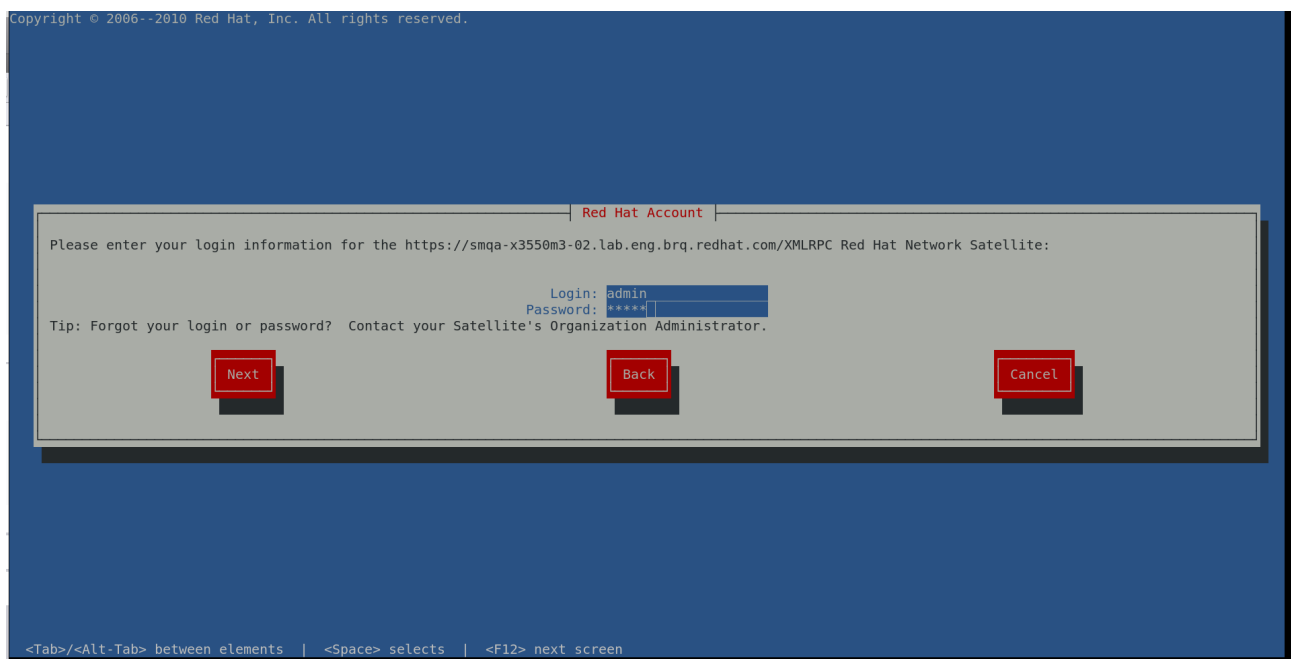
- HTTP Proxy** (Section Header)
- ☐ I would like to connect via an HTTP proxy.
- Proxy Location:
-  **Example:** squid.example.com:3128
- ☐ Use Authentication with HTTP Proxy:
- Proxy Username:
- Proxy Password:
-

7. Red Hat Account

- GUI: Please enter your account information for the <hostname> Spacewalk server / TUI: Please enter your login information for the https://<hostname>/XMLRPC Red Hat Network Satellite



A screenshot of a GUI window titled "System Registration (na-ibm-x3650m4-03-vm11.lab.eng.brq.redhat.com)". The window has a "Red Hat Account" header with the Red Hat logo. The main text says: "Please enter your account information for the **smqa-x3550m3-02.lab.eng.brq.redhat.com** Spacewalk server:". Below this are two input fields: "Login:" with the value "admin" and "Password:" with masked characters "*****". A tip icon and text below the fields read: "Tip: Forgot your login or password? Contact your Satellite's Organization Administrator." At the bottom are three buttons: "Cancel", "Back", and "Forward".



A screenshot of a TUI window titled "Red Hat Account". The main text says: "Please enter your login information for the https://smqa-x3550m3-02.lab.eng.brq.redhat.com/XMLRPC Red Hat Network Satellite:". Below this are two input fields: "Login:" with the value "admin" and "Password:" with masked characters "*****". A tip icon and text below the fields read: "Tip: Forgot your login or password? Contact your Satellite's Organization Administrator." At the bottom are three buttons: "Next", "Back", and "Cancel". At the very bottom of the screen, navigation instructions are displayed: "<Tab>/<Alt-Tab> between elements | <Space> selects | <F12> next screen".

8. Create Profile – Hardware

- GUI: System Name / A recognizable name will help you identify this system in a management interface. / TUI: A Profile Name is a descriptive name that you choose to identify this System Profile on the Red Hat Satellite web pages. Optionally, include a computer serial or identification number.
- GUI: System Name / TUI: Profile name
- GUI: Profile Data / / TUI: ...
- GUI: ... / TUI: Additional hardware information ...
- GUI: Red Hat Linux Version: 7Workstation / TUI: Version: 7Workstation

System Registration (na ibm-x3650m4-03-vm11.lab.eng.brq.redhat.com)

Create Profile

System Name

A recognizable name will help you identify this system in a management interface.

System Name:

Profile Data

Send us a profile of your current hardware and packages so we can determine what updates are available.

☒ Send hardware profile

☒ Send package profile

Hardware Info (na ibm-x3650m4-03-vm11.lab.eng.brq.redhat.com)

Hardware Profile

Red Hat Linux Version: 7Workstation

Hostname: ibm-x3650m4-03-vm11.lab.eng.brq.redhat.com

IP Address: 10.34.74.11

CPU Model: QEMU Virtual CPU version (cpu64-rhel6)

CPU Speed: 2199 MHz

Memory: 3792 MB

Copyright © 2006--2010 Red Hat, Inc. All rights reserved.

Create Profile - Hardware

A Profile Name is a descriptive name that you choose to identify this System Profile on the Red Hat Satellite web pages. Optionally, include a computer serial or identification number.

Profile name: -x3650m4-03-vm11.lab.eng.brq.redhat.com

[*] Include the following information about hardware and network:
Press <space> to deselect the option.

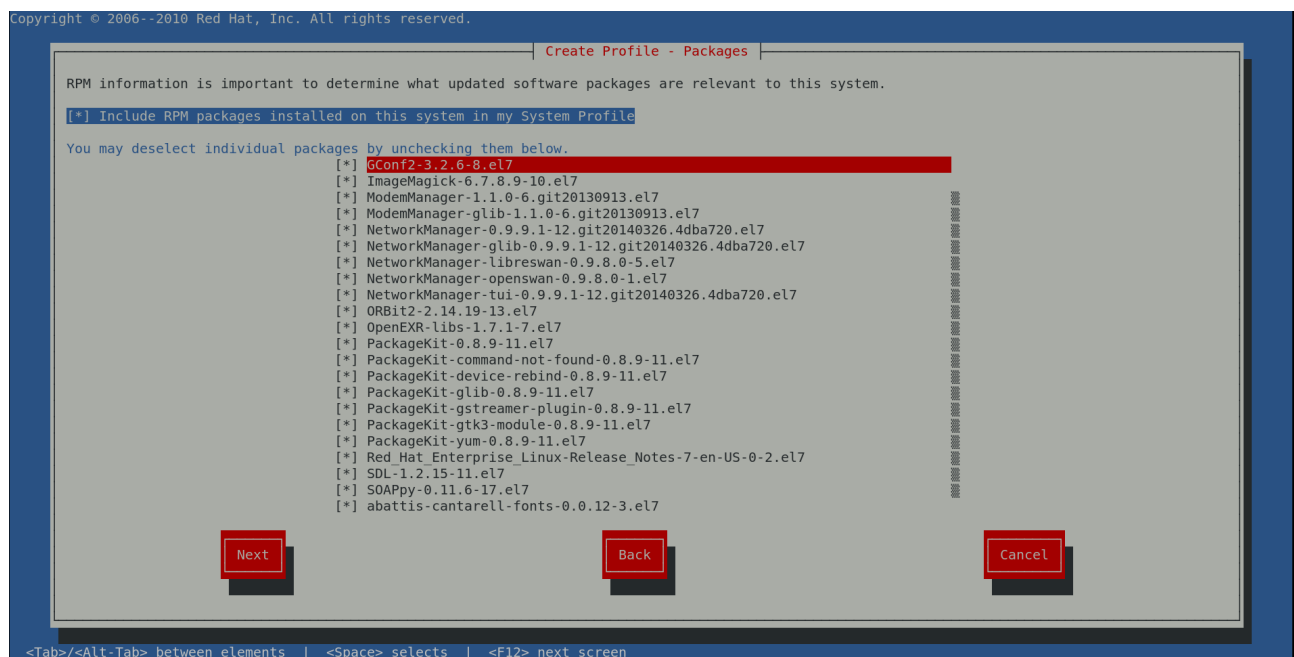
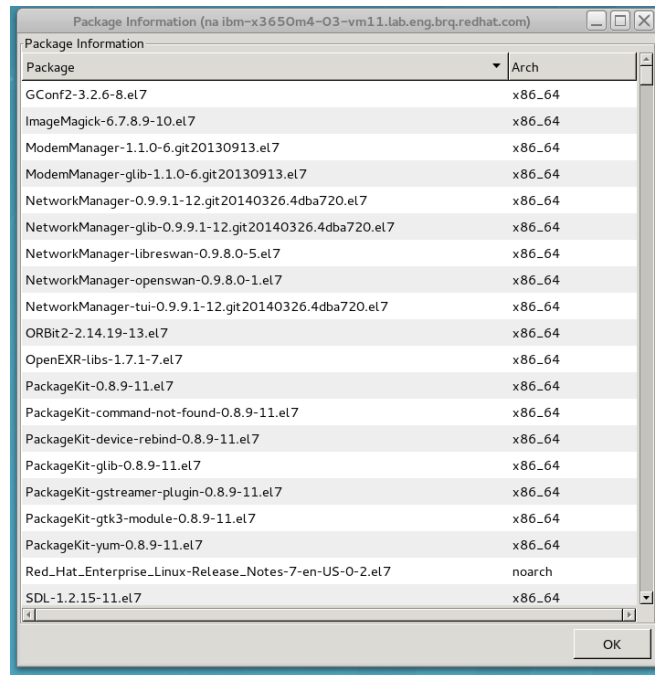
Version: 7Workstation CPU model: QEMU Virtual CPU version (cpu64-rhel6)
Hostname: ibm-x3650m4-03-vm11.lab.eng.brq.redhat.com
CPU speed: 2199 MHz IP Address: 10.34.74.11 Memory: 3792 megabytes

Additional hardware information including PCI devices, disk sizes and mount points will be included in the profile.

<Tab>/<Alt-Tab> between elements | <Space> selects | <F12> next screen

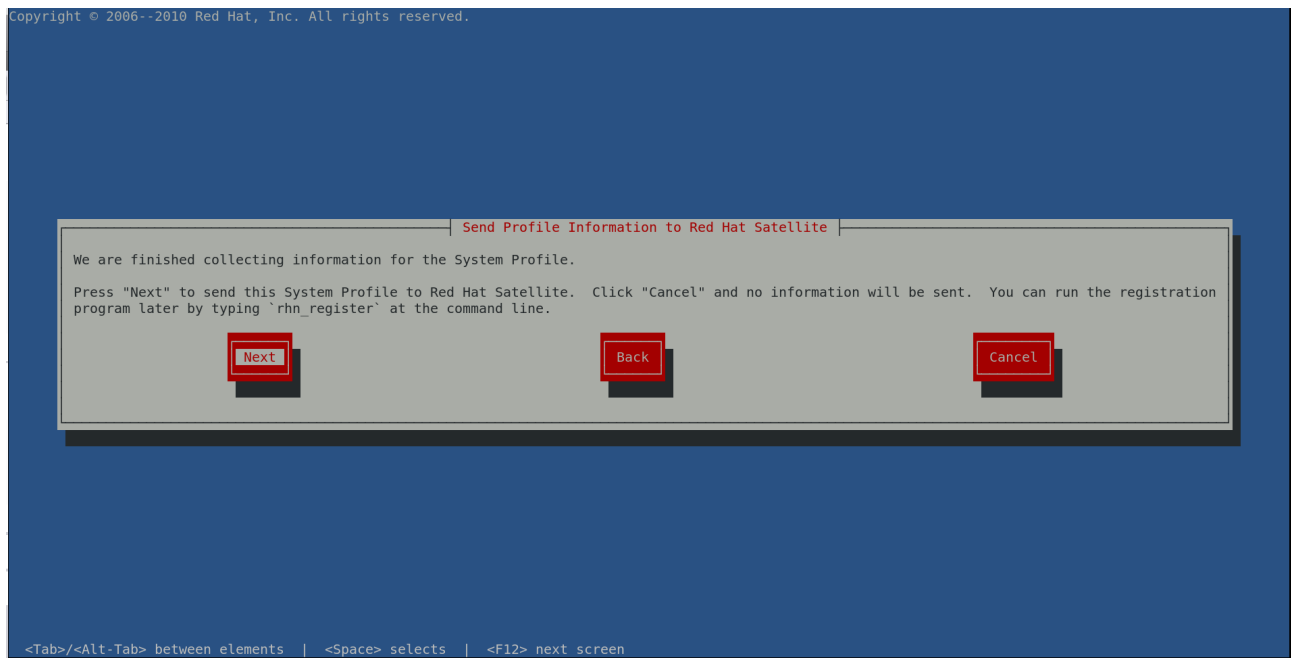
9. Create Profile – Software

- GUI: Send us a profile of your current hardware and packages so we can determine what updates are available. / TUI: RPM information is important to determine what updated software packages are relevant to this system.



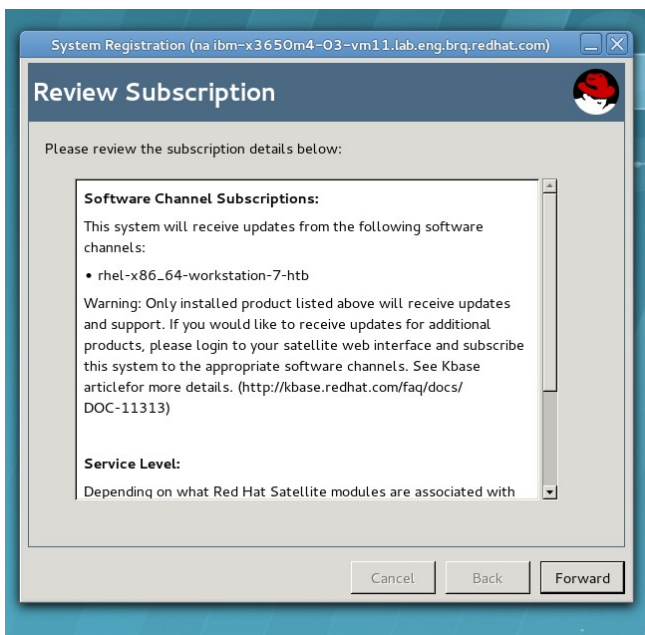
10. Send profile Information to Red Hat Satellite

- only in TUI

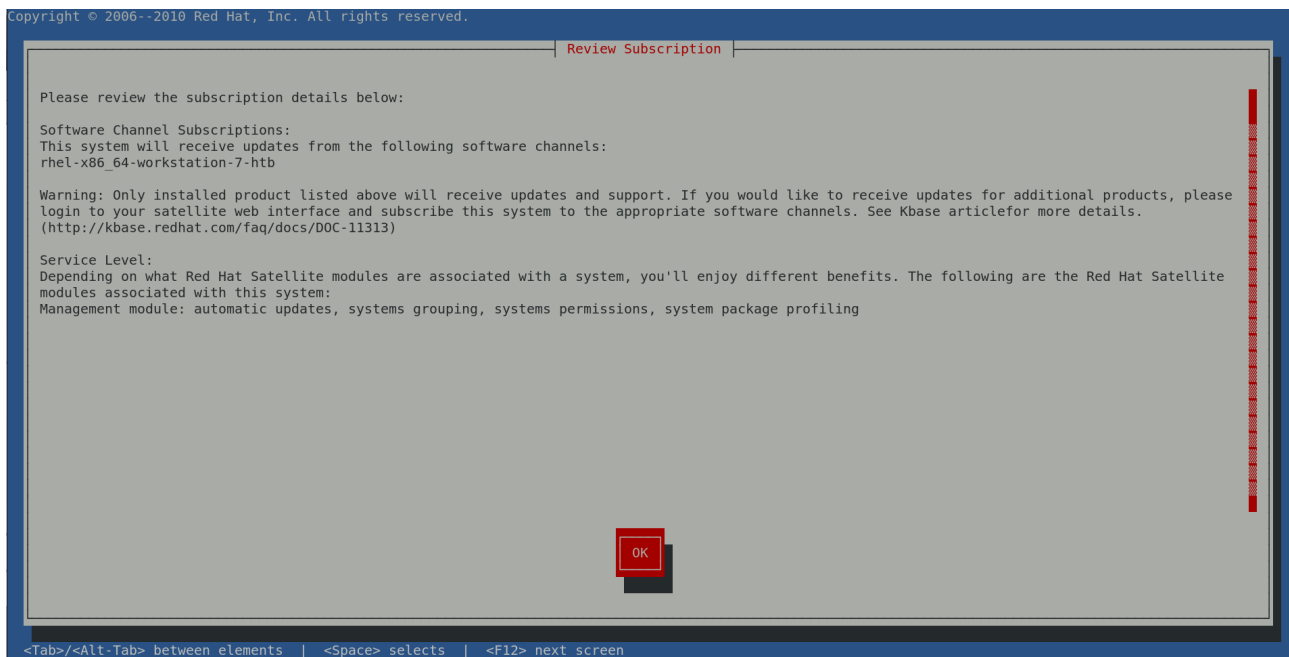


11. Review Subscription

- typos, Kbase, ...



Copyright © 2006--2010 Red Hat, Inc. All rights reserved.

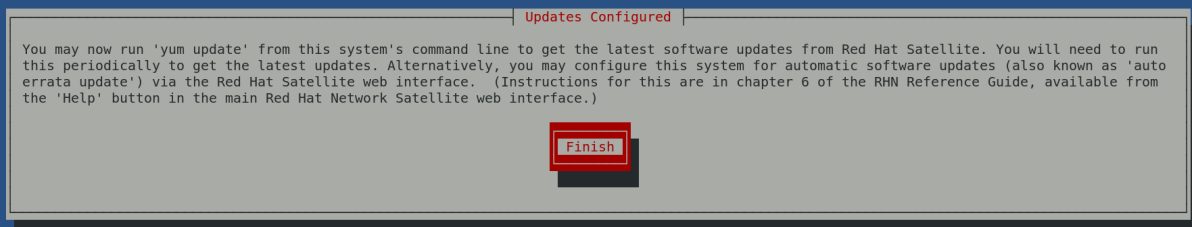


12. Updates Configured

- texts are completely different



Copyright © 2006--2010 Red Hat, Inc. All rights reserved.



<Tab>/<Alt-Tab> between elements | <Space> selects | <F12> next screen